

CLARENDON  
LONDON N8

# PARK

*collection*



WELCOME TO

# THE PARK COLLECTION

*at Beeley Mansions*





# A NEW PLACE

## *To Call Home*

A thriving 12-acre city village in North London, located in Zone 3 delivered by St William. Clarendon will be a new cultural quarter for residents to enjoy comfort, nature and a wealth of amenities.

The Park Collection at Alexandra Palace Gardens offers a range of one and two bedroom apartments, all of which have private outdoor space and will be a short distance away from the one acre park and a new exciting waterside cafe at Clarendon.

The Park Collection colours, finishes and materials make all the difference.

While the brick exterior echoes traditional architecture, the interiors are focused on modern living. Comfort and efficiency blend with luxury touches such as geometric tiling, bespoke kitchen ironmongery and sleek kitchen cabinets. Creating fantastic social living and dining spaces, while some apartments enjoy dual aspect, with views over Hornsey Park.







Computer generated image, indicative only.



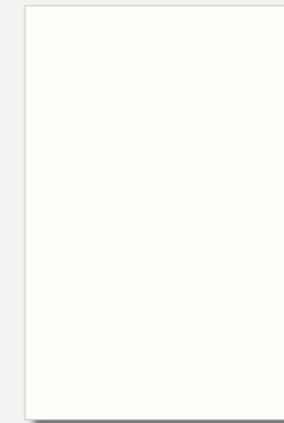
Computer generated image, indicative only.



Showhome Photography

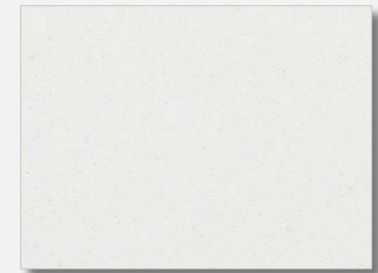
# PARK COLLECTION

*interiors*

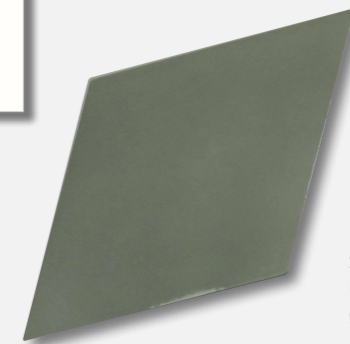


Base units  
White gloss

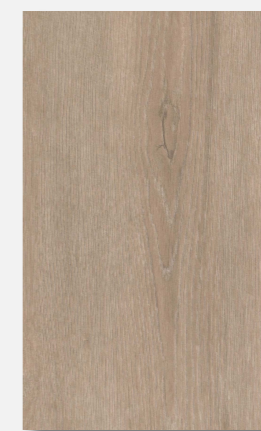
Wall units  
White soft  
touch matt



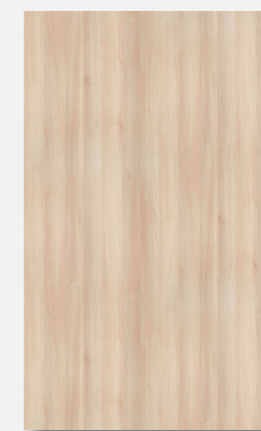
Countertop  
Polished white  
composite surface



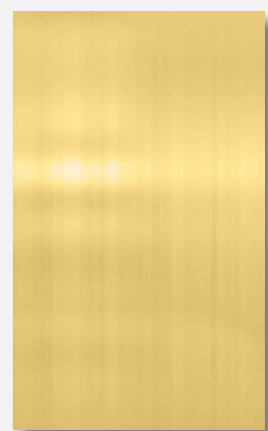
Splashback  
Matt green  
geometric tile



Flooring  
Oak veneto crema



Open shelf and tall units  
Satin light oak



Bespoke ironmongery  
Satin brass with knurling  
detail to handles

Your attention is drawn to the fact that in rare circumstances it may not be possible to obtain the exact products or materials referred to in the specification. St William Homes LLP reserves the right to alter, amend or update the specification, which may include changes in the colour, material or brand specified. In such cases, a similar alternative will be provided. St William Homes LLP reserves the right to make these changes as required.



# the Park Club



## RESIDENTS' FACILITIES

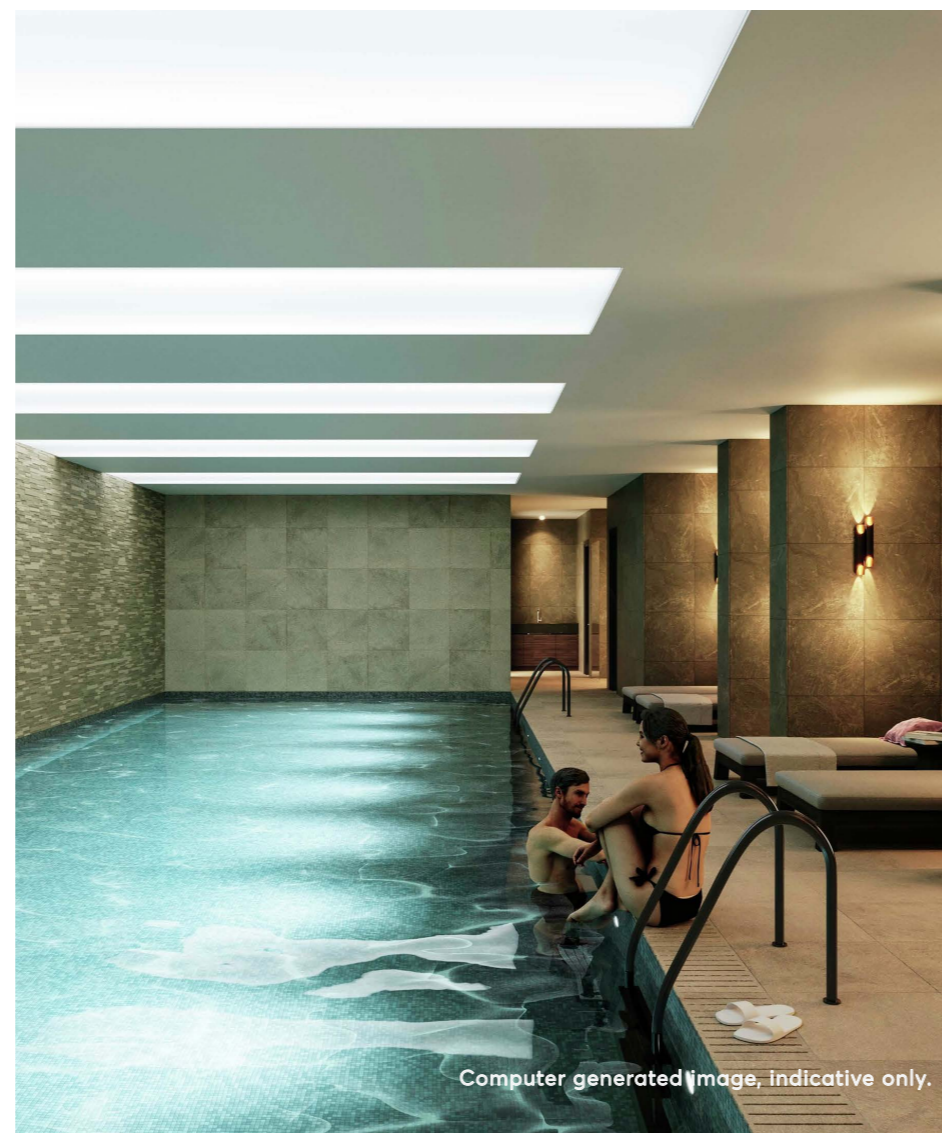
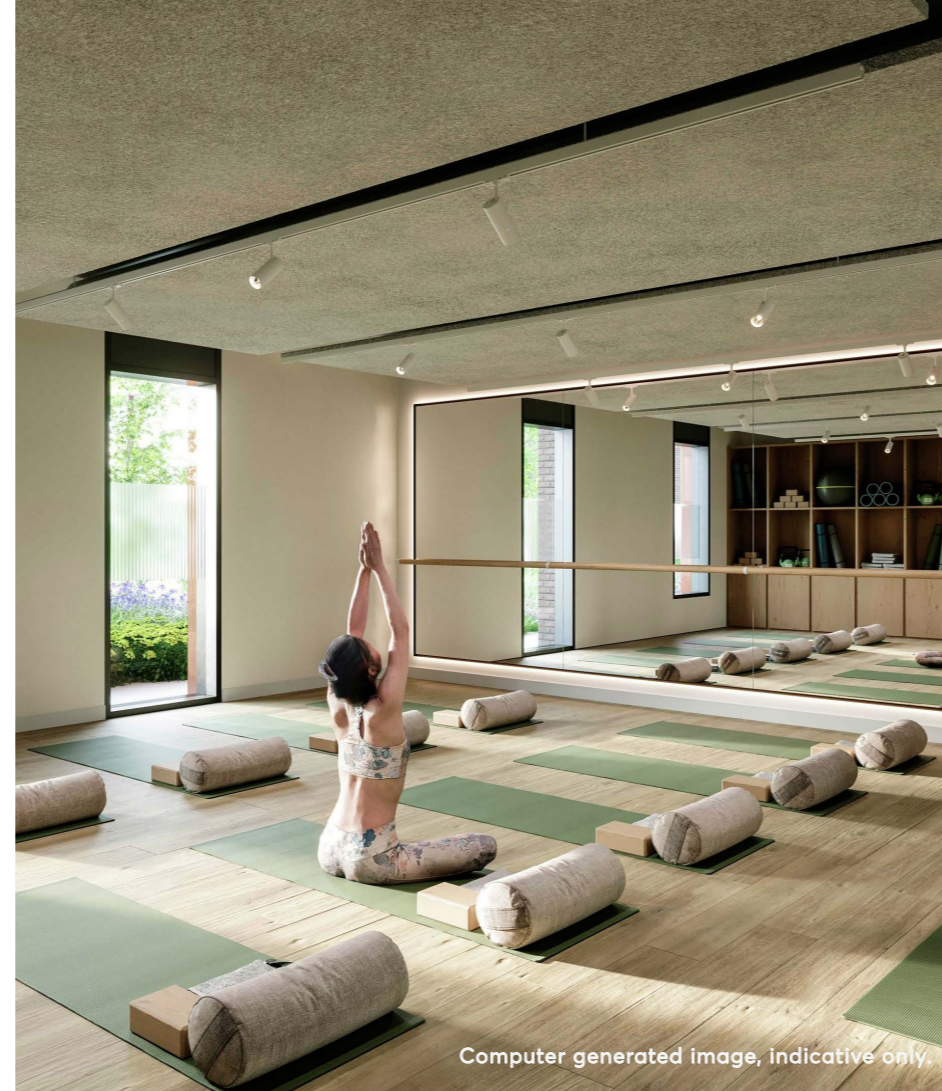
- 24 hour concierge
- Lounge and lobby
- 16m swimming pool
- Sauna & steam room
- Treatment room
- Gym
- Meeting & dining room
- One acre park
- Intensity studio
- Zen studio



## LOCATION

- In the heart of North London, Zone 3
- Four key stations nearby
- King's Cross only 14 minutes\* away
- 196 acres of parkland at Alexandra Palace nearby
- Part of Haringey's Heartland Regeneration Area

\*Travel times taken from tfl.gov.uk





LOVE YOUR

*lifestyle*



Photography of Clarendon meanwhile gym



Photography of Clarendon meanwhile gym



Photography of Clarendon meanwhile gym





**YOUR  
WATERSIDE**  
*park view*





Photography at Clarendon



Photography at Clarendon



# VIEWS OF *Hornsey Park*

All homes in the Park Collection have a balcony or terrace with views over the new 1 acre Hornsey Park.

Photography at Clarendon



**FLOOR**  
*plans*



**BEELEY MANSIONS  
TYPE 18B  
ONE BEDROOM  
APARTMENT**

FLOOR: 3 AND 4  
APARTMENTS: 126, 134



Floorplans are for approximate measurements only. Measurements may vary within a tolerance of 5%. The dimensions are not intended to be used for carpet sizes, appliance sizes or items of furniture. Furniture shown is not included.

Living / Dining  
3.57 x 2.86 m / 11'9" x 9'5"

Kitchen  
1.99 x 3.44 m / 6'7" x 11'4"

Bedroom  
3.23 x 3.71 m / 10'7" x 12'2"

**Net Internal Area**  
**50.01 sq m / 538 sq ft**

Balcony  
3.87 x 1.47 m / 12'6" x 4'

**Total Balcony Area**  
**5.60 sq m / 60.2 sq ft**



◀▶ Measurement points | W Fitted wardrobe | - - Optional wardrobe | W/D Washer/Dryer (optional extra) | U Utility cupboard | C Coat cupboard

**BEELEY MANSIONS  
TYPE 18D  
ONE BEDROOM  
APARTMENT**

FLOOR: 7  
APARTMENT: 155



Floorplans are for approximate measurements only. Measurements may vary within a tolerance of 5%. The dimensions are not intended to be used for carpet sizes, appliance sizes or items of furniture. Furniture shown is not included.

Living / Dining  
3.50 x 4.31 m / 11'6" x 14'2"

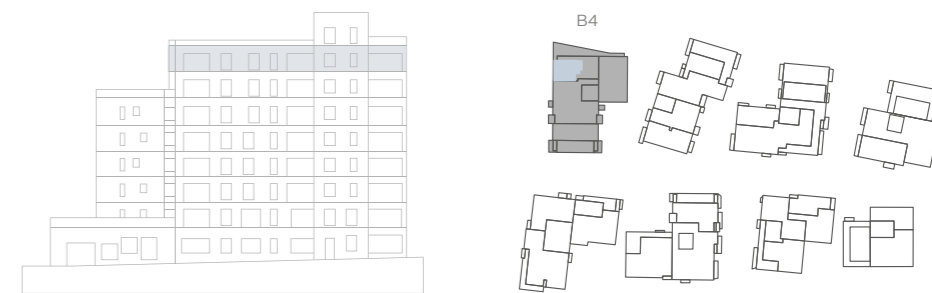
Kitchen  
1.95 x 3.81 m / 6'5" x 12'6"

Bedroom  
3.25 x 3.71 m / 10'8" x 12'2"

**Net Internal Area**  
**52.78 sq m / 568.1 sq ft**

Balcony  
3.88 x 1.53 m / 12'8" x 5'1"

**Total Outdoor Area**  
**5.60 sq m / 60.2 sq ft**

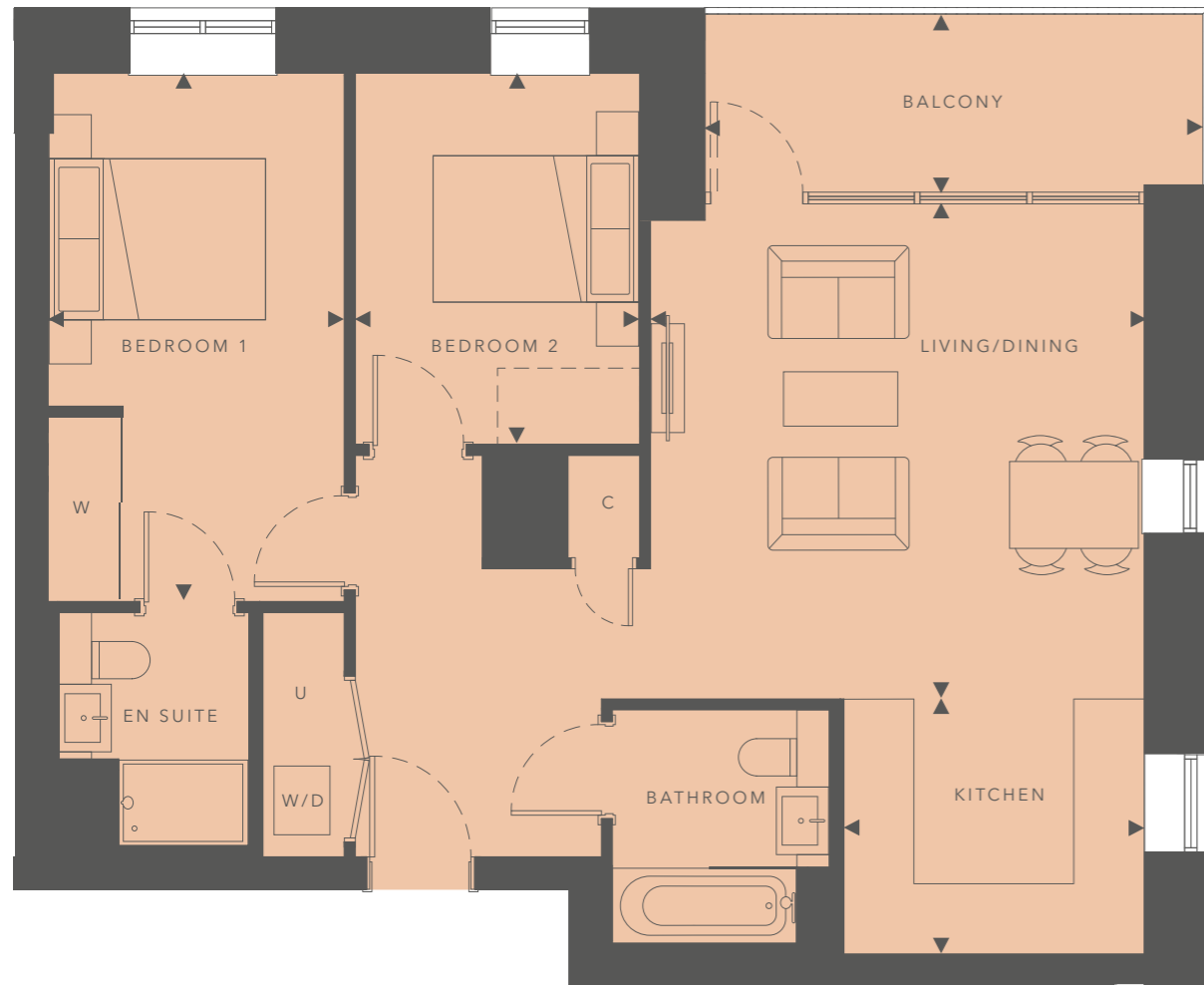


◀▶ Measurement points | W Fitted wardrobe | - - Optional wardrobe | W/D Washer/Dryer (optional extra) | U Utility cupboard | C Coat cupboard



# BEELEY MANSIONS TYPE 23H TWO BEDROOM APARTMENT

FLOOR: 3  
APARTMENT: 124



Floorplans are for approximate measurements only. Measurements may vary within a tolerance of 5%. The dimensions are not intended to be used for carpet sizes, appliance sizes or items of furniture. Furniture shown is not included.

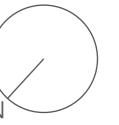
|                           |                                 |
|---------------------------|---------------------------------|
| Living / Dining           | 4.57 x 4.55 m / 15'0" x 14'11"  |
| Kitchen                   | 2.79 x 2.35 m / 9'2" x 7'9"     |
| Bedroom 1                 | 2.73 x 4.85 m / 8'11" x 15'11"  |
| Bedroom 2                 | 2.62 x 3.40 m / 8'7" x 11'2"    |
| <b>Net Internal Area</b>  | <b>71.72 sq m / 771.9 sq ft</b> |
| Balcony                   | 4.51 x 1.64 m / 14'9" x 5'4"    |
| <b>Total Balcony Area</b> | <b>7.34 sq m / 79 sq ft</b>     |



◄ Measurement points | W Fitted wardrobe | -- Optional wardrobe | W/D Washer/Dryer (optional extra) | U Utility cupboard | C Coat cupboard

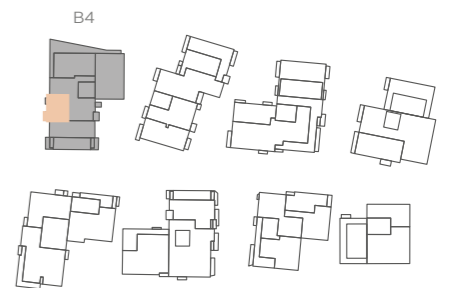
# BEELEY MANSIONS TYPE 53 TWO BEDROOM APARTMENT

FLOOR: 4  
APARTMENT: 133\*



Floorplans are for approximate measurements only. Measurements may vary within a tolerance of 5%. The dimensions are not intended to be used for carpet sizes, appliance sizes or items of furniture. Furniture shown is not included.

|                           |                                 |
|---------------------------|---------------------------------|
| Living / Dining           | 3.54 x 4.16 m / 11'8" x 13'8"   |
| Kitchen                   | 2.57 x 2.78 m / 8'5" x 9'1"     |
| Bedroom 1                 | 2.75 x 4.88 m / 9'0" x 16'0"    |
| Bedroom 2                 | 2.65 x 3.43 m / 8'8" x 11'3"    |
| <b>Net Internal Area</b>  | <b>64.61 sq m / 695.4 sq ft</b> |
| Balcony                   | 1.80 x 3.30 m / 5'11" x 10'10"  |
| <b>Total Balcony Area</b> | <b>5.94 sq m / 63.9 sq ft</b>   |



\*Apartment layout is mirrored to the one shown.

◄ Measurement points | W Fitted wardrobe | -- Optional wardrobe | W/D Washer/Dryer (optional extra) | U Utility cupboard | C Coat cupboard



# MEET THE *Team*



**BETZY DINESEN**

HEAD OF SALES



**FRANCESCA IVES**

PROJECT SALES MANAGER



**KAY BARTLETT**

SENIOR SALES CONSULTANT



**WILLIAM SWINBURN**

SALES CONSULTANT



**TERI REDDY**

SALES CONSULTANT

## CONTACT DETAILS

Clarendon Sales and Marketing Suite,  
Alington House, 1 Mary Neuner Road,  
London, N8 0ES

020 3002 9464

[sales.clarendon@stwilliam.co.uk](mailto:sales.clarendon@stwilliam.co.uk)

[www.clarendonn8.co.uk](http://www.clarendonn8.co.uk)

