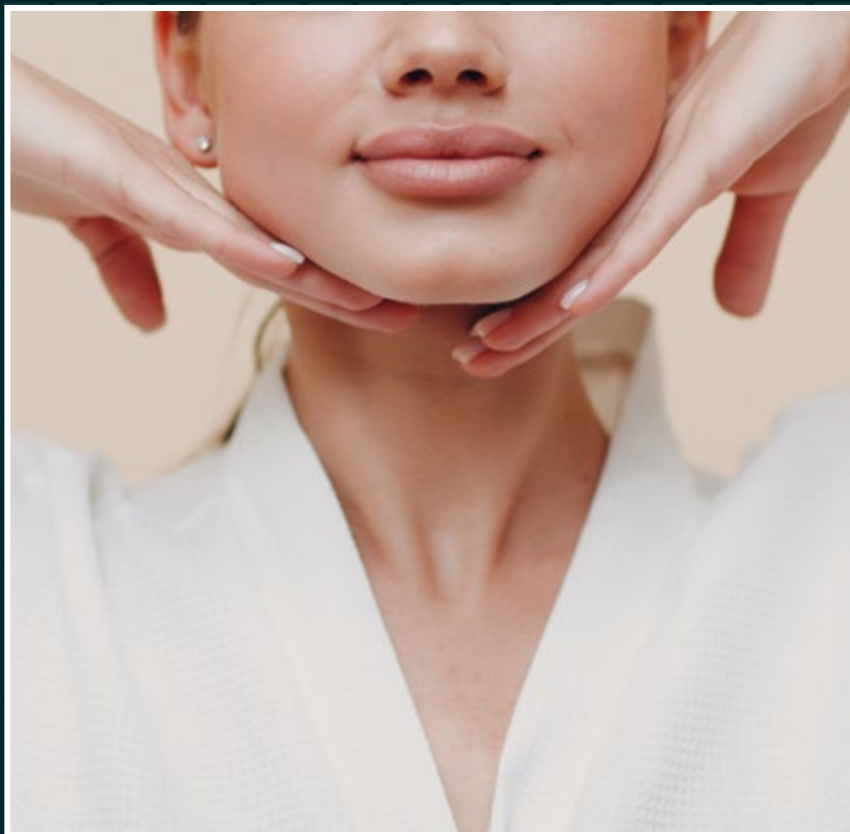


*the
Park
Club*



EXCLUSIVE
RESIDENTS' FACILITIES

CLARENDON
LONDON N8

MAKE YOURSELF

AT
HOME

*the
Park
Club*

Life at Clarendon, North London's best kept secret is truly unique. As a resident, you can enjoy an exclusive collection of fantastic facilities and flexible working spaces at The Park Club. Meet with friends, connect with neighbours, work in an inspiring environment, look after your health and fitness, or simply unwind. The best part? It's all just moments from your home at Clarendon.

From a morning coffee in the lounge, to a relaxed evening swim, the Park Club is designed for every one of your needs.



SCAN FOR MORE
INFORMATION AND
YOUR APPLICATION TO
JOIN THE PARK CLUB.

AT THE HEART



DISCOVER THE EXCLUSIVE RESIDENTS' FACILITIES AVAILABLE AT CLARENDON

CLARENDON
LONDON N8

Well-being is fundamental to life at Clarendon, which is why the Park Club is conveniently located at its heart, making it easily accessible for all residents.

With lush gardens, landscaped open spaces, rejuvenating health and wellness facilities, café, shops and community centre, Clarendon will be a new 12-acre city village, the perfect place to enjoy urban life.

*the
Park
Club*

- Residents' Lounge
- Gym
- 16m Swimming Pool
- Sauna
- Steam Room
- Intensity Studio
- Zen Studio
- Treatment Room

LOVE YOUR

WELL-BEING

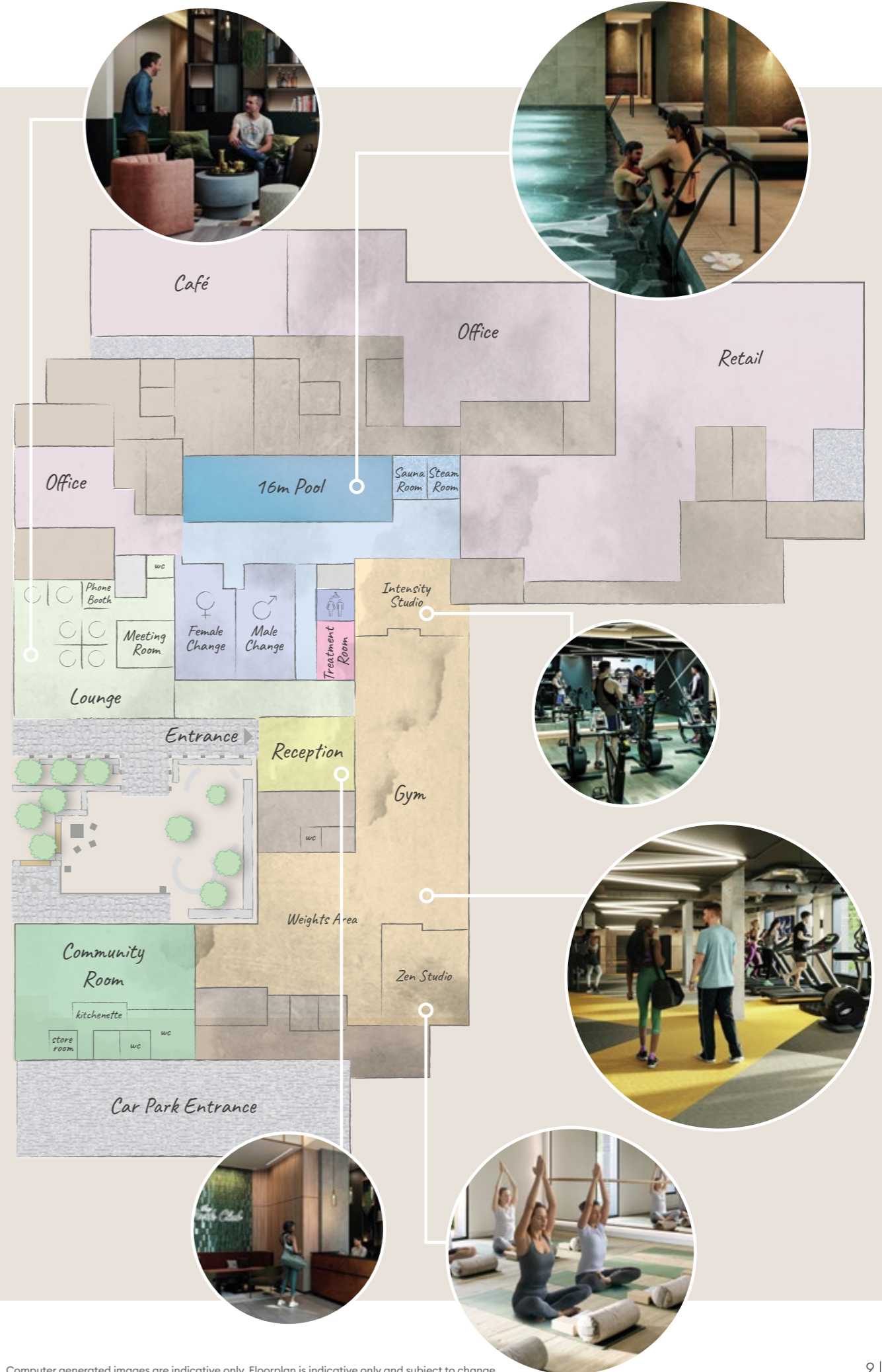


Computer generated image is indicative only.

LIVE 24 HOUR CONCIERGE

THE 24-HOUR CONCIERGE

Residents' facilities at Clarendon are designed to make life easier, allowing you to enjoy the superb range of amenities on offer. The 24-hour concierge service, centrally located in Hornsey Park Place, provides answers for queries from the unusual to the everyday.



Photography of concierge now open at Hornsey Park Place.

Computer generated images are indicative only. Floorplan is indicative only and subject to change.

WELCOME

TO YOUR

CLUB

THE LOUNGE LOBBY

With its relaxed atmosphere, the Park Club lobby invites you to book treatments, classes and meeting spaces.

The striking design features elegant and contemporary lighting and luxe furnishings in an industrial inspired setting, drawn from the gas holders that once occupied the site.



Computer generated image is indicative only.



Start your day with coffee just how you like it in the residents' lounge, enjoyed in peace as you catch up on the day's news, or as you chat with fellow residents.



HAPPY SPACE

THE RESIDENTS' LOUNGE

This relaxed yet stylish area is made up of three curated spaces with a mix of seating arrangements, allowing for pockets of privacy or more social gatherings.

Comfortable seating, ambient lighting and smart furnishing make this space a home away from home.

FOCUS



TAKE THE OPPORTUNITY TO NETWORK WITH OTHER RESIDENTS AND ENJOY THE SOCIABLE BUZZ OF OTHERS WORKING AROUND YOU.



FLEXIBLE WORKSPACES

When it's time to get down to business, the flexible workspaces offer a fantastic alternative to working from home.

With Wi-Fi connectivity and inspiring aesthetics, the workspaces offer all the benefits of an office, but are just a few minutes from your apartment.

THE MIND

MEET EAT AND CONNECT



THE RESIDENTS' MEETING & DINING ROOM

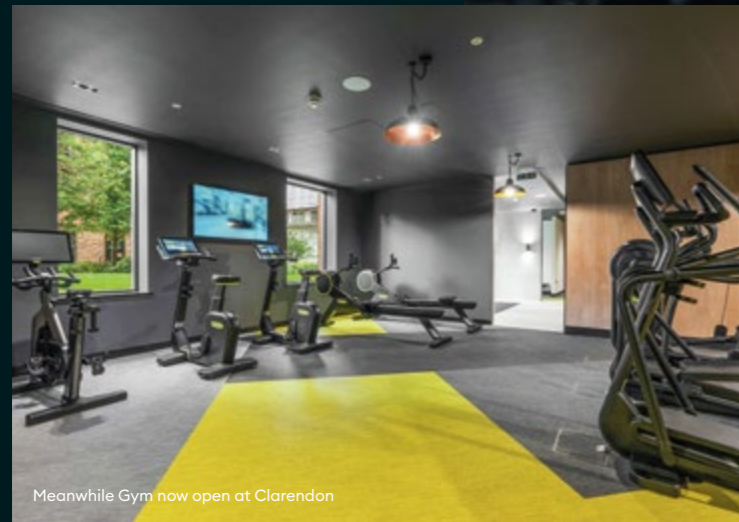
For an afternoon meeting, or dinner with friends, this versatile space is the perfect place to gather.

Equipped with AV and connectivity, the meeting room has everything you need for business talks, or as a more private space for work away from home or the office. The elegant styling, with warm wood detailing and soft furnishings, make it an equally comfortable environment as a private dining room for entertaining guests, while a concealed kitchenette helps complete the transformation.

THE GYM
& INTENSITY STUDIO

With gym facilities moments from home, it's easy to fit in exercise when the working day is over.

The Park Club gym has state-of-the-art equipment, including Technogym treadmills, bikes and cross trainers. It is split into individual zones (stretch, strength, cardio and group training) so residents can create a varied workout programme.



Meanwhile Gym now open at Clarendon



Computer generated image is indicative only.



WORK OUT

AT YOUR

PAGE

INTENSITY STUDIO

This immersive and atmospheric studio is designed specifically for high impact and intensity workouts. It is available for private training sessions or group classes such as spin. Dynamic lighting creates an energetic setting for working out.

Two training studios are available for private personal training, and both are equipped with Wexer virtual reality classes.



A CALMER SPACE, WITH NATURAL TEXTURES AND LARGE WINDOWS THAT ALLOW THE LIGHT TO POUR IN.



YOUR MIND

AND BODY

THE ZEN STUDIO

The Zen studio is designed for gentler practices such as yoga, or more controlled but no less challenging regimes including pilates and barre.

Residents can book the Zen studio for a private class, or it is available for shared sessions.

BE AHEAD FEEL RIGHT IN

THE 16M SWIMMING POOL

At the end of a busy day, the swimming pool offers the perfect opportunity to relax.

At 16 metres long, the pool is designed for both a good workout and more leisurely laps. Soft lighting, tiling in natural colours and comfortable loungers create a soothing setting to rest in after your swim. Changing rooms, showers and lockers take care of the practicalities.



SOFT LIGHTING AND
NATURAL FINISHES MAKE
THIS A SOOTHING SPACE
FOR EARLY-MORNING
LAPS OR A WEEKEND DIP.



INDULGE

THE SPA, SAUNA & TREATMENT ROOM

FEEL ANY TENSION MELT AWAY AS YOU
STEP INTO THE SPA AREA.

AND
UNWIND



Computer generated image is indicative only.

The glass fronted and wood-clad sauna can help relax muscles with its dry heat.



The treatment room is equipped for a range of massages, facials and other body treatments.

RELAX

COMPLETE YOUR SENSE OF WELL-BEING WITH A SAUNA AND SPA TREATMENT, THE IDEAL WAY TO FINISH YOUR DAY.



SURROUNDED BY GREEN

“WE WANTED CLARENDON RESIDENTS TO HEAR BIRDSONG AND BE ABLE TO PICK AN APPLE FROM A TREE. PEOPLE WILL FEEL ENVELOPED BY THE RICH PLANTING THAT CHANGES WITH THE SEASONS. WE WANTED TO MAKE IT EASY FOR PEOPLE TO MEET UP WITH THEIR NEIGHBOURS, AND PROVIDE A TEMPTING VARIETY OF PLACES FOR PLAY AND EXERCISE.”

LDA DESIGN
LANDSCAPE ARCHITECTS

HORNSEY PARK

Refresh your mind and enjoy some time in nature with a late afternoon stroll around the landscaped one acre park that weaves through the heart of Clarendon.

Featuring a rich array of parklets, play areas and walks with a centrepiece park, this generous green space is ideal for residents to relax, play in and enjoy. Imaginative planting includes apple trees, ferns, colourful wildflowers and shady trees interspersed with winding paths, creating an environment that evolves and changes with the seasons.



GET IN TOUCH

Tel: +44 (0)20 3002 9464

Email: sales.clarendon@stwilliam.co.uk

YOUR WELL-BEING JOURNEY STARTS HERE.

The Park Club, Clarendon, Mary Neuner Road, London N8 0ES



TO FIND OUT MORE ABOUT THE
PARK CLUB PLEASE GET IN TOUCH
BY PHONE OR EMAIL, OR SCAN
THE QR CODE SHOWN.

OUR VISION
2030
TRANSFORMING TOMORROW



Proud to be a member of the Berkeley Group of companies

St William
Designed for life

The information in this document is indicative and is intended to act as a guide only as to the finished product. Accordingly, due to St William policy of continuous improvement, the finished product may vary from the information provided. These particulars should not be relied upon as statements of fact or representations and applicants must satisfy themselves by inspection or otherwise as to their correctness. This information does not constitute a contract or warranty. The dimensions given on plans are subject to minor variations and are not intended to be used for carpet sizes, appliance sizes or items of furniture. Clarendon is a marketing name and will not necessarily form part of the approved postal address. Applicants are advised to contact St William to ascertain the availability of any particular property. Computer-generated images are indicative only [and subject to planning]. The site plan is indicative only and subject to change [and subject to planning]. In line with our policy of continuous improvement we reserve the right to alter the layout, building style, landscaping and specification at anytime without notice. Maps are not to scale and show approximate locations only.

W257/02CA/0922



Computer generated image of The Park Club entrance is indicative only.

