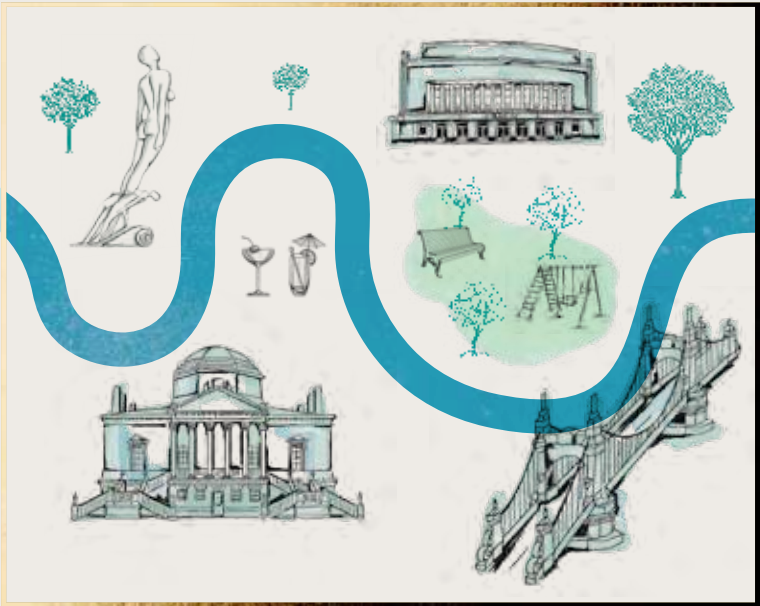


FULHAM  
REACH  
LONDON W6

# Local Area Guide



A stylized map of Hammersmith & Fulham, featuring a central blue river winding through a network of white streets. The map is decorated with various icons: a boat with people on the river, a classical building, a statue, a bicycle, a couple walking, a soccer ball, a cup of coffee, a dining table, and several trees. The title 'The heart of Hammersmith & Fulham' is written in a purple serif font across the center.

*The heart of  
Hammersmith  
& Fulham*





1

2

6

3

4

5

# Experiences in London

**Fulham Reach** is a high-quality, mixed-use development in a striking riverside location in Hammersmith and Fulham, delivering a vibrant and sustainable environment for residents, visitors and the local community. Just three miles west of Central London, many of the Capital's exciting destinations are just a local walk away.

## Hammersmith & Fulham

# excites



The beauty of Fulham Reach is that whilst it offers direct access into the City, it is also an exciting destination itself with everything you need just moments from your front door.



- 1 Riverside promenade at **Fulham Reach**
- 2 **The Blue Boat Pub & Restaurant** on-site venue to enjoy refined food and premium drinks
- 3 **It's Gelato stall** at one of the many community events
- 4 **Fulham FC** one of the oldest football clubs in London
- 5 **Frank Banfield park** with playground
- 6 **Fulham Reach Rowing Club** on the Thames
- 7 **The River Café** an iconic Michelin-starred Italian restaurant
- 8 **The Fulham Reach Boulevard** bustling with cafés and shops as well as Bing Pilates and Bread Lab



## Did you know...

Both the latest James Bond film, *No Time to Die*, and Freddie Mercury's biopic *Bohemian Rhapsody*, were both filmed in front of nearby Hammersmith Bridge? You'll be in star-studded company at Fulham Reach.



# A vibrant scene

Fulham Reach is conveniently positioned to enjoy the hustle and bustle of the Capital, meaning there is never a lack of things to do. Whatever your mode of transport, whether by foot, car or tube within minutes you can be enjoying London's vibrant entertainment scene, famous restaurants or world-class shopping destinations.

- 1 Brasserie Blanc** a great spot for pre-dinner drinks, a lazy Sunday catch up or fun night out
- 2 Sam's Riverside** the destination riverfront restaurant
- 3 Hammersmith Apollo** Art Deco entertainment venue
- 4 Olympic Studios** the renowned café, cinema and members' club in Barnes
- 5 Riverside Studios** an inspirational and creative space for those with an appreciation for the arts





# Welcome to W6

- 1** On-site facilities
  - Fulham Reach Boat Club
  - The Tamesis Club (Residents-only)
  - Bing Pilates
  - Benham & Reeves Estate Agents
  - Brasserie Blanc
  - Tesco Express
  - The Blue Boat Pub & Restaurant
  - The Bread Lab
  - It's Gelato
- 2** Hammersmith Bridge (0.4km)
- 3** Furnivall Gardens (0.6km)
- 4** Ravenscourt Park (1.3km)
- 5** Thameside Tennis Club (1.4km)
- 6** Reservoir Lagoon (1.3km)
- 7** Main Lake (2.6km)
- 8** Queen's Tennis Club (1.4km)
- 9** Lillie Road Recreation Ground (1.1km)
- 10** Fulham Football Club (1.6km)
- 11** Fulham Palace (2.2km)
- 12** Putney Bridge (2.9km)
- 13** Barnes Common Nature Reserve (3km)
- 14** Chiswick House and Gardens (2.9km)
- 15** King's House Sports Ground (2.1km)
- 16** Thames Path (0.6km)
- 17** Hurlingham Polo Club (3.5km)
- 18** Hammersmith Apollo (0.5km)
- 19** Imperial College London, Charing Cross Campus (0.5km)
- 20** The River Café (0.6km)
- 21** The Crabtree (0.6km)
- 22** Bishop's Park (1.7km)
- 23** Kings Mall (0.8km)
- 24** Lyric Hammersmith Theatre (0.8km)
- 25** Riverside Studios (0.1km)
- 26** Sam's Riverside (0.1km)
- 27** Olympic Studios Cinema (2.2km)
- 28** Duke Meadows Golf Course (2.1km)

**KEY**  
 ..... Thames Path

Distances are approximate only.  
 Source Google Maps. Map is not to scale







FULHAM REACH SALES & MARKETING SUITE  
FULHAM REACH, DISTILLERY WHARF,  
PARR'S WAY, LONDON W6 9GD

+44 (0)20 7870 9500

SALES@FULHAMREACH.CO.UK  
FULHAMREACH.CO.UK



PLEASE SCAN TO  
FIND OUT MORE



Proud to be a member of the  
Berkeley Group of companies

